

CLSACC

COMMUNITY LEGAL SERVICES AND COUNSELING CENTER

FIGHTING POVERTY. PROMOTING JUSTICE. IMPROVING LIVES.

COMMUNITY LEGAL SERVICES AND COUNSELING CENTER



ANNUAL REPORT
JULY 1, 2007 TO JUNE 30, 2008

Founded as Cambridgeport Problem Center in 1970, Community Legal Services And Counseling Center (CLSACC) provides free civil legal assistance and affordable mental health counseling to people with low incomes throughout the Cambridge and Greater Boston areas.

CLSACC has always been an organization of volunteer professionals. Since our inception, we have been sustained by the commitment and dedication of volunteer lawyers and mental health professionals. Today, CLSACC is the only volunteer-based agency of its kind in the area, combining legal assistance with mental health counseling. Our unique interdisciplinary approach has enabled CLSACC to keep pace with the ever-changing and interrelated needs of our clients.

One West Street
Cambridge, MA 02139
ph 617-661-1010
fax 617-661-3289
www.CLSACC.org

COMMUNITY LEGAL SERVICES AND COUNSELING CENTER

formerly Cambridgeport Problem Center

MISSION STATEMENT

Community Legal Services And Counseling Center provides free civil legal aid and affordable psychological counseling to low-income people. Our services combat the effects of poverty and violence by helping clients and their children meet basic human needs for safety, income, health and housing. CLSACC draws on the expertise of dedicated volunteer professionals to provide direct services to our community's most vulnerable members.

Serving cities and towns in the
Greater Boston area
Providing immigration services statewide

Dear Friends,

This has been an extraordinary year for CLSACC. We welcomed a new Executive Director in September 2007, grew by three additional employees, opened a small satellite office (down the street), and were awarded additional targeted funds to allow for a crucial expansion in services. Yet so much more needs to be done.

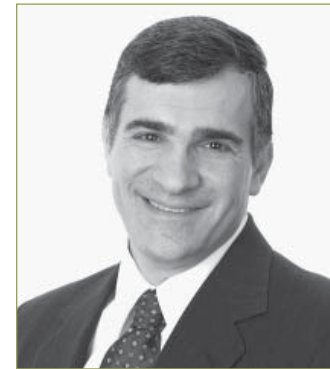
In October 2007 Associate Clinical Director Mojdeh Rohani joined the staff part-time; she became full-time in July with additional dedicated funding. In early 2008 CLSACC received emergency bar foundation support to hire two highly experienced immigration attorneys, Deirdre Giblin and Lisa Weinberg, to help us tackle the enormous gap in legal services for very vulnerable low-income immigrants and refugees.

As do so many of our clients, we overcame multiple obstacles to end the year with significantly increased capacity. But the needs of our clients are so great. As we write this, the full extent of the country's economic woes remains unknown. Within Massachusetts the rate of domestic violence related deaths has almost tripled and is disproportionately high for immigrants and refugees. Economic stress will surely intensify the struggles of all of our clients and considerably increase the need for CLSACC's counseling and legal services.

As always, CLSACC has been able to fulfill its mission through the dedicated efforts of our staff, tireless volunteers, Board of Directors, and many Friends and supporters. We begin this year with huge fundraising challenges and must somehow address the enormous inadequacy of our current office space. Over the coming year, the agency will dedicate itself to addressing our space constraints while working to meet client demand and

budget constraints in an uncertain economic landscape.

We hope that you can take a few minutes to read about the significant impact CLSACC has had in the community through the stories that are included of some of our remarkable clients and volunteers. We sincerely thank you for your support that allows us to help the many vulnerable individuals who turn to CLSACC each day.



A handwritten signature in black ink that reads "Tony Mirenda".

TONY MIRENDA
PRESIDENT, BOARD OF DIRECTORS



A handwritten signature in black ink that reads "Barbara Mitchell".

BARBARA MITCHELL
EXECUTIVE DIRECTOR

PROGRAM DESCRIPTION

CLSACC's Legal Program provides free civil legal assistance to clients whose incomes are at or below 125% of the federal poverty level (\$26,500 for a family of four). CLSACC handles cases in the areas of family law and domestic violence, housing and homelessness prevention, disability benefits, and immigration and refugee rights. Responding to community needs, CLSACC's services focus on the most urgent problems confronting our clients: domestic violence, lack of affordable housing, and inadequate medical and financial security.

The Center provides services ranging from advice to representation in complex litigation. CLSACC's legal work also includes training and education, collaboration with community partners, writing and distributing publications, and work on public policy and reform issues that affect the lives of many people in our community.

Legal services at CLSACC are provided by a dedicated corps of volunteer attorneys, law students, paralegals and translators, and by the Center's legal director, assistant legal director, immigration supervisor and staff attorneys, and intake paralegal. To enhance client outcomes, CLSACC, in appropriate cases, places a social work intern on a client's legal team for case management, supportive counseling for clients, and for consultations to attorneys to help them assess and understand a client's needs and behaviors from a psychological perspective.

CLSACC's clients are encouraged to take an active role in their legal cases. Our attorneys help clients make informed decisions. We believe that clients who learn about their legal rights gain confidence, learn to advocate for themselves, and increase their capacity to take control of their lives.

HELPING THOSE IN NEED

Jane Park Farris came to CLSACC from Tennessee in 2007. She learned about the volunteer opportunities available at CLSACC through a fellow volunteer, Shirley Reiss. Today, Jane assists CLSACC's Housing and Disability Attorney, John Froio, in representing people with disabilities.



As a recipient of disability benefits herself, Jane understands some of the legal challenges involved in Social Security disability cases. As she explains, "It's important to provide legal services for people with disabilities because the regulations are so complicated." Her work is motivated by a passion to help those in need and a belief that "it isn't right that people must pay part of their disability benefits to lawyers in order to obtain those benefits."

Helping others through the difficulties of the SSA disability claim process as a CLSACC volunteer has been challenging and rewarding for Jane. Her dedication to her clients and to CLSACC's mission to increase access to justice is clear. "The people who need it most are the most fulfilling to work with. These are the people who have fallen through the cracks," says Jane. "I'm glad CLSACC can provide these services."

PREVENTING HOMELESSNESS

Through a collaborative project with the Cambridge District Court, every week CLSACC receives a list of eviction cases and sends notices to low-income tenants that free legal assistance is available. It was through this project that Joanne, a single mother of two and a victim of domestic violence, came to CLSACC for help with her eviction case.

Joanne met with CLSACC's Housing and Disability Attorney, John Froio, who found out that Joanne was facing eviction because the local housing authority had terminated her Section 8 rental subsidy voucher after Joanne failed to complete her annual paperwork. As part of the agency's Interdisciplinary Services Project, Attorney Froio consulted with CLSACC's Clinical Director, Paul Goldmuntz, who agreed to evaluate Joanne to try to understand why she did not follow through. Dr. Goldmuntz determined that Joanne was suffering from Post-Traumatic Stress Disorder related to her abusive relationship, as well as ADHD, both of which contributed to her extreme disorganization and inability to take care of monthly paperwork and bills. With this information, a volunteer housing attorney took on Joanne's case and asked the Housing Authority to make a reasonable accommodation for Joanne's disability. After reviewing the documentation provided by Dr. Goldmuntz, the Housing Authority agreed to issue Joanne a new Section 8 voucher and forgive a substantial amount of her rent arrearage. With the help of CLSACC's interdisciplinary program and volunteer attorney, Joanne was able to keep a home for herself and her children.

PROGRAM ACHIEVEMENTS

AT THE AGENCY

CLSACC's Legal Program, including 3 full-time and 2 part-time attorneys, a part-time intake paralegal, and dedicated volunteer lawyers, handled 707 cases this year. 38 volunteer lawyers and 32 volunteer law students, interns, paralegals, and interpreters donated more than 8,034 hours of service. Four of the volunteer attorneys worked two or more full days each week.

CLSACC doubled the size of its immigration unit to increase representation of vulnerable immigrants and refugees suffering from domestic violence or with complex asylum cases. The expanded immigration program also utilizes volunteers to undertake in-depth intake interviews of asylum seekers whose cases can then be expeditiously placed for representation.

IN THE COMMUNITY

Collaboration with community agencies allows CLSACC to reach out to clients in many different settings:

- In an innovative collaboration with the Cambridge District Court, CLSACC's Housing Attorney John Froio has been effective in providing legal counsel and preventing homelessness for tenants and their families facing eviction.
- CLSACC's Legal Director, Ellen Wilbur, works closely with community agencies and shelters that assist battered women. CLSACC was one of two recipients of the Marie Siraco Community Activism Award from RESPOND, a domestic violence agency in Somerville, in recognition of the excellent free civil legal services CLSACC provides survivors of domestic violence.
- CLSACC's attorneys participated in 22 community legal education programs, providing important legal information and training to hundreds of participants.

WHAT A CLIENT SAYS ABOUT CLSACC

"The services provided have been instrumental in enabling me to keep a roof over my daughter's head and enabling me to get assistance to support both of us during my impairment. I am so grateful that CLSACC exists."

* Comment is taken from client outcome

CHANGING LIVES THROUGH LAW

When attorney Herb Epstein moved to Massachusetts after retiring in 1990, he quickly joined the state bar and began looking for pro bono opportunities. At the suggestion of the volunteer coordinator at the Massachusetts Bar Association, he began volunteering in a local immigration legal aid program, and he has been doing this work ever since. Earlier this year, he started volunteering at CLSACC.

Immigration law was new to Herb who had been an electrical engineer, a patent attorney, and an attorney in a corporate legal office. His previous work, he says, "focused on the relation of the law to things. Immigration law is focused on people. Particularly in asylum work, it's clearly a matter of someone's life and death."

Herb says he enjoys the challenge of the work he is doing now and also sees it as the fulfillment of his duty as an attorney. "Law is a profession, not a commercial transaction, but poor people don't often get represented because of the cost. At this point in my life, I owe it to the profession and to other people to take on this kind of work."



ESCAPING VIOLENCE

Since her early childhood in Guinea, Fanta had been exposed to violence and trauma. Her father, a military officer in Guinea, was killed in a military coup when she was just an infant. When Fanta was 17, her mother and stepfather's affiliation with a political opposition party led military guards to invade Fanta's home, violently attacking Fanta and the other women, and abducting and later killing her stepfather. Fanta's uncle advised the family to leave the country as soon as possible. With his help, the family escaped to neighboring Mali. Only Fanta had a passport, so she was able to obtain a visa to go to the United States. In 2002, at the age of 18, Fanta left her family and arrived in the U.S., alone and traumatized.

When Fanta came to CLSACC, Immigration Supervisor, Valerie Fisk, helped her to obtain critical medical and dental care for the injuries she sustained when she was attacked, as well as psychological counseling with the Center's Associate Clinical Director, Mojdeh Rohani, to help her cope with the trauma she had experienced. Her physical and psychological evaluations served as evidence of the persecution and violence Fanta faced in Guinea. With this evidence and the dedicated work of CLSACC staff and volunteers, Fanta was successfully granted political asylum in the U.S. After her case was resolved, Fanta moved to Ohio, where she has found a safe home in a thriving community of other Guinea natives. Fanta now has a job and is attending school, in hopes of one day reuniting with her family.



PROGRAM DESCRIPTION

CLSACC's Counseling Program offers counseling to low-income people who have difficulty gaining access to counseling services. CLSACC believes that access to mental health services should be available to all who need it, regardless of their economic circumstances. However, affordable mental health resources are limited in our community, and the availability of professional counseling for people with and without insurance is restricted for low income people. CLSACC fills critical gaps in services for our clients.

The Center serves people who seek help to manage crises, stress, and other problems that affect their ability to function. Clients work on overcoming the effects of violence, torture, sexual abuse, and incest; most grapple with poverty, social isolation, depression, anxiety, or substance abuse.

CLSACC provides weekly short-term, long-term, or intermittent counseling for individuals and couples. We also run groups. Counseling services focus on improved coping. With counseling, clients build confidence and develop the power and skills to secure basic needs and to pursue personal goals.

We encourage client choice and control in the identification and pursuit of goals. This includes client participation in the decision about the duration of the counseling relationship. The Center's approach is collaborative, seeking to build upon and maximize client strengths. We believe that the relationships counselors form with their clients are fundamental to the healing process.

CLSACC also conducts forensic psychological assessments of immigrant trauma victims who seek legal status in the U.S. Documentation of the psychological effects of trauma and violence is often key to the success of their legal cases.

The counseling services at CLSACC are provided by dedicated volunteer mental health professionals and graduate students, and by the Center's Clinical Director and Associate Clinical Director.

* Note: Names and other identifying details in the following client stories have been changed to protect client confidentiality.

WHAT CLIENTS SAY ABOUT CLSACC

Where do I begin? It has helped me through some very difficult times.

I think CLSACC provides an amazing service to people of low income. It's helped me manage my problems in my life—I couldn't imagine my life without this resource.

It's been an oasis in a stormy sea. The one place a week I can review my life and get a strategy and direction.

Counseling in a group has given me another perspective to gauge my life. I feel it's also a safe place to voice my fears.

It is a place I know I am safe.

**Comments taken from client outcome surveys*

ADDRESSING TORTURE AND VIOLENCE



Isabeall Logan is committed to providing clinical services to a particularly underserved population: victims of political violence and torture. After training with Doctors of the World in the process of providing psychological evaluations for torture survivors seeking asylum in this country, Isabeall joined CLSACC where she coordinated the Asylum Evaluation Project until early 2008. Through

this program, volunteers conduct evaluations that document the trauma survivors sustained in order to provide evidence that is often crucial to the success of their asylum cases.

“When a client comes for an evaluation, it is often the first time they’ve told their whole story,” Isabeall explains. “Therapists are trained to listen, and clients are able to tell their stories for the first time in a safe place. It’s some of the most difficult and most rewarding work I’ve ever done.”

While leading CLSACC's Asylum Evaluation Project, Isabeall worked with other agencies to expand services to asylum seekers, more than doubling the number of volunteer evaluators at CLSACC. Now a volunteer at CLSACC herself,

Isabeall sees the Project continuing to grow. “The program is moving in a really good direction, forging closer ties between counseling and asylum law programs. Often the evaluation process itself can be healing, but one of the strengths of CLSACC's program is that someone getting an evaluation has the opportunity to follow up with treatment.”

“People who need these evaluations have been through what I think is the worst kind of trauma—intentional, extreme pain at the hands of another human being.”

PROGRAM ACHIEVEMENTS

VOLUNTEER POWER

50 devoted volunteer counselors, supervisors, and students and the Center's Counseling Program staff provided services to **405 people**. There were **2,549 visits** to the Center this year. **Volunteers donated 6,237 hours** of service to CLSACC clients.



EXPANDING SERVICES

In October 2007, the Agency welcomed **Mojdeh Rohani, LICSW**, as CLSACC's Associate Clinical Director. Mojdeh works with the Clinical Director to see clients, recruit and manage volunteers, and supervise the interdisciplinary social work services. Beginning in early 2008, she took on the responsibilities of the Psychological Evaluation Project Coordinator to recruit and supervise volunteer clinicians to conduct forensic psychological evaluations for refugee and immigrant trauma survivors. Her wealth of experience in working with immigrants and refugees has allowed CLSACC to expand services to this population.

WHAT A CLIENT SAYS ABOUT CLSACC

"My counselor is compassionate and has enabled me to access the inner strength necessary to face the 'ghosts' that trigger my disabling conditions. CLSACC is part of my safety net."

* Comment is taken from client outcome survey.

PROVIDING COMPREHENSIVE CARE

As the social work intern in CLSACC's interdisciplinary program this year, **Tobin Rodriguez** bridged the Center's legal and counseling services.

On a single day at CLSACC, Tobin could help a counseling client to strengthen his coping skills, develop strategies with an attorney to address his client's self-defeating behavior, and meet with a legal client, referred by her attorney, whose anxiety jeopardizes the outcome of her case.

"Having lawyers and counselors collaborating can be challenging because we come from very different standpoints. What's invigorating about the process is discovering how we can come to understand each other's viewpoints and how we can work together to better meet our clients' needs."

Tobin reports that his "incredibly broad and deep" experience at CLSACC has enriched his skills as a therapist, through both his work with clients and his "intense and challenging supervision" with senior clinicians. It also has encouraged him to consider working in a range of settings where clinical services might be needed.



ALLISON'S STORY

Allison had obtained several restraining orders against her abusive husband during their five-year marriage. Finding it impossible to support herself and her young son and without family or friends to help, Allison took her husband back each time. When her husband's last assault put her in the hospital, she resolved to leave. Staff at the shelter where she fled with her son directed her to CLSACC for counseling.

Her many years in an abusive and controlling relationship left Allison with intense anxiety and self-doubt that interfered with her ability to make decisions. Though terrified of her husband, she wondered if she had been wrong to leave. She accepted his assertion that she would never make it on her own. Allison's therapist helped her challenge this belief, cope with the strain of her divorce, and identify actions to take so that she could support herself and her son. Within several months, Allison found a job and an apartment, and she is now building a safe and stable life.

LAURA BOOTH

CLSACC is proud to honor **Laura Booth** with the **2008 Dr. Joseph H. Brenner Award**. For thirty years, Laura has demonstrated her exemplary commitment to helping families and individuals meet their basic needs. She has worked tirelessly to secure social and economic justice by promoting community participation through access and education.



Before taking her current position as Budget and Policy Director in the office of State Senator Anthony Galluccio, Laura was a committed advocate for low-income residents of Cambridge. For most of those 15 years, she worked at the Cambridge Economic Opportunity Committee (CEOC), the city’s federally designated anti-poverty agency, first as an advocate and then as the agency’s Policy Director. While at CEOC, Laura was known for being a zealous advocate for her clients, many of whom were also clients in CLSACC’s housing law program.

While seeking every opportunity to help her clients find and keep safe, affordable housing and access public benefits, Laura also worked to keep the concerns of all of the state’s low-income, disabled, and immigrant residents at the fore. Laura was an appointed member of the Expiring Use Working Group for the Joint Committee on Housing, the Cambridge City Council Subcommittee on State-Funded Public Housing, and the Department of Transitional Assistance Regional Advisory Board. She is currently affiliated with the Family Economic Initiative, Food Stamp Improvement Coalition, Massachusetts Immigrant and Refugee Advocacy Coalition, and the Massachusetts Coalition for the Homeless Public Policy Committee. In addition to her own public advocacy, Laura organized regular forums that allowed community members to communicate directly with elected officials about policies and programs affecting them.

Regardless of organizational affiliation, the impetus for Laura’s work has always been to ensure basic security for individuals and families and to engage people in active civic participation. In State Senator Anthony Galluccio’s office, Laura strives to keep issues of critical importance to vulnerable residents at the forefront of the legislative agenda. CLSACC is pleased to honor Laura for her exceptional achievements and longstanding contribution and commitment to our community.

Laura’s colleagues are unreserved in their praise:

“Laura, throughout her career at CEOC, was vigilant in preventing unjust evictions. Laura knows that housing is the foundation upon which families and individuals maintain and build their lives. Laura knows that the loss of one’s home results in a negative economic, emotional, and health spiral from which most people cannot easily recover. Laura knows that we have a long way to go to ensure the day that every family and individual has a safe and affordable home. It is this knowledge that made Laura a tireless advocate for people who were at risk of losing their most precious possession - their home.”

Elaine DeRosa, Executive Director, Cambridge Economic Opportunity Committee

“Laura has been a relentless advocate for those who are intimidated and lack adequate resources to obtain quality legal services. Her advocacy has helped countless individuals and families, and she is an example of what public service stands for.”

Senator Anthony Galluccio

“Laura has consistently gone above and beyond the call of duty in her service to the people of Cambridge. She has fought tirelessly for the rights of low-income, immigrant and minority residents, and her energy, compassion, and wisdom are an inspiration to those around her.”

Representative Alice Wolf

The Dr. Joseph H. Brenner Award is presented each year to an outstanding individual or organization to honor the founder of CLSACC for his vision that volunteer professionals can provide critical services to people with low incomes.

PREVIOUS HONOREES INCLUDE:

- 2007 • Leslee Klein, former CLSACC Executive Director
- 2006 • Marguerita Reczycki, Greater Boston Legal Services and Harvard Immigration and Refugee Clinic
- 2005 • Allan Rodgers, Massachusetts Law Reform Institute
- 2004 • Dr. Paul Goldmuntz, CLSACC’s Counseling Director
- 2003 • MIRA Coalition
- 2002 • Transition House
- 2001 • Solutions At Work and founder Macy DeLong



Dr. Joseph H. Brenner

The heart of CLSACC is our dedicated group of volunteer lawyers and counselors, who make a significant contribution to the well-being of **more than 1,000 clients each year**. Without any financial remuneration, CLSACC's volunteers perform a vital service to the community. They give their time and energy generously, and their contribution goes a long way toward making the community a better place in which to live. CLSACC's Board of Directors and staff acknowledge the commitment of the following people who volunteered between July 1, 2007 and June 30, 2008.

LEGAL VOLUNTEERS

CLSACC's volunteer attorneys work in private firms of all sizes, on their own, or in the public sector. This year, **38 attorneys and 9 translators, 11 law students, 10 paralegals, and 2 social work interns** participated in CLSACC's pro bono program:

ATTORNEYS

- | | | |
|------------------|--------------------|-------------------|
| Lynne Allen | Doris Gelbman | John Puricelli |
| Dawn Ash | Deirdre Giblin | Beverly Rich |
| David Bander | Mary Alana Gleason | Robert Ricles |
| Steven Bander | Elizabeth Grimes | Lesley Rosenbloom |
| Hodges Brown | John Hand | Janis Sallinger |
| Lee Brown | Lisa Jacobsen | Leslie Sammon |
| Susan Corcoran | Richard Kanoff | Michael Skinner |
| Andrew Cornell | Kimberly Kelly | Kelly Sullivan |
| Scott Edmiston | Ellen Kief | Edward Surette |
| Herb Epstein | Catherine Kligler | Robert Trant |
| Jane Park Farris | Aisha Naib | Lisa Weinberg |
| Milton Fatt | Eleanor Newhoff | Phil Whitehead |
| Daniel Finn | Dennis O'Malley | |

LAW STUDENTS AND OTHER VOLUNTEERS

- | | | |
|-----------------|-------------------|---------------------|
| Halima Ali | Michael Greenberg | Dennis Ready |
| Todd Ames | Andree Grenier | Katherine Robertson |
| Darren Braham | Andrew Hamill | Magaly Rojas |
| Lucy Candib | Colette Hendricks | Abigail Ross |
| Erin Cox | Nina Huynh | Bikram Sherchan |
| Julie Dahlstrom | Bindiya Jha | Fatima Sillah |
| Petra Denison | Jana Katz | Jeffrey Stovall |
| Lea DiPetrillo | Gillian Kotlin | Bobby Vilinsky |
| Joanne Dottin | Emmanuel Matsoro | Jonathan Vogeler |
| Ellen Fisher | Jordan McKay | Monika Wrobel |
| Janet Ghattas | Eva Millona | |

COUNSELING VOLUNTEERS

CLSACC's counseling volunteers are licensed psychologists, social workers, and other mental health professionals with established practices in the public and private sectors. Counseling services are provided by volunteer mental health professionals who donate between 4 and 8 hours per week. Senior clinicians volunteer 1 or 2 hours each week as supervisors. During the course of the year, the following 50 mental health professionals volunteered their time and talents:

COUNSELORS

- | | | |
|------------------|---------------------|-----------------|
| Margery Altman | Sandra Lovell | Susan Strang |
| Barry Blesser | Judith Masters | Penny Tyson |
| Geraldine Brehm | Martha Older | Judith Ullman |
| Kathleen Flinton | Kathryn Portnow | Jo-Ann Vaughn |
| Frances Garfield | Shirley Reiss | Dale Walsh |
| Ruth Housman | Paula Sacks | Kimberlee Worth |
| Susie Kaim | BillieSue Sawyer | Laura Zimmerman |
| Deborah Lochrie | Stephanie Skavenski | |

SUPERVISORS

- | | | |
|-------------------|-------------------------|-------------|
| Vera Spohr Cohen | Patricia Hunt | Penny Tyson |
| Charlotte Diamond | Nancy Johnson | Holly Zeeb |
| Debra Filiurin | Maureen Reed-Cunningham | |
| Hope Haff | Caroline Strout | |

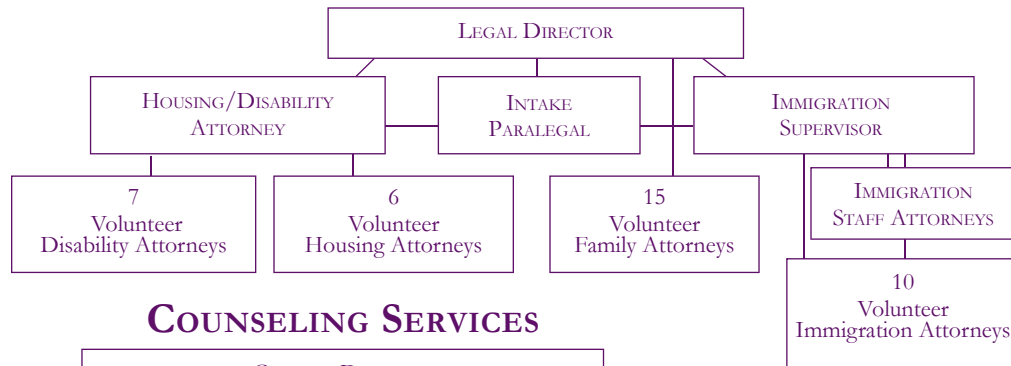
INTERNS

- | | | |
|---------------|-------------------|-----------------|
| Alicia Abell | Robert Greenebaum | Tobin Rodriguez |
| Shana Dangelo | Francine Lorimer | |

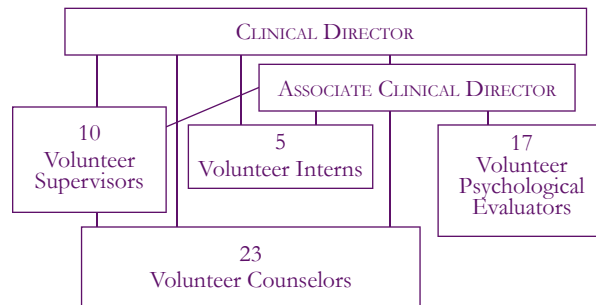
ASYLUM EVALUATORS

- | | | |
|-------------------|----------------|------------------|
| Suzanne Artemieff | Susie Kaim | Maria-Jose Perez |
| Shana Dangelo | Sarah LeVine | Aparna Rao |
| Kathleen Flinton | Naomi Leavitt | Shirley Reiss |
| Edward Fontenot | Alice LoCicero | Randi Schalet |
| Susan Gere | Isabeall Logan | Lauren Shebairo |
| Sarah Henderson | Martha Older | |

LEGAL SERVICES

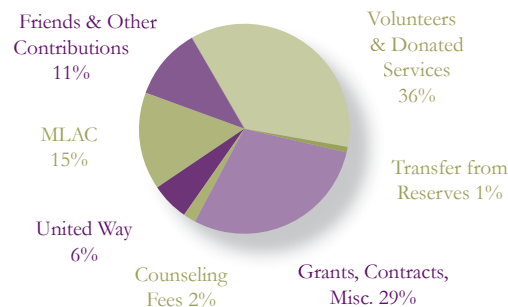


COUNSELING SERVICES

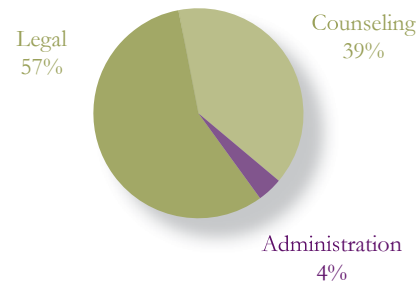


The time donated by CLSACC's volunteers is equal to that of more than **7 full-time staff**

WHERE THE DOLLARS COME FROM



WHERE YOUR DOLLARS GO



FINANCIAL STATEMENT ♦ July 1, 2007 to June 30, 2008

REVENUES

	2008	2007
Massachusetts Legal Assistance Corporation	197,805	172,743
United Way of Massachusetts Bay	75,482	80,446
Foundations and Corporations	297,144	269,442
Government Grants and Sub-Contracts	48,500	48,600
Friends of CLSACC, Board of Directors, and Other Contributions	147,466	139,007
Counseling Client Fees	26,995	26,543
Investment and Miscellaneous Income	33,868	19,146
Transfer from Equipment Reserve	12,582	
Total Revenues Before Donated Services, Facilities, and Supplies	839,842	755,927
Donated Services, Facilities, Equipment, and Supplies	482,386	399,844
TOTAL REVENUES	1,322,228	1,155,771

EXPENSES

Salaries	533,180	487,032
Fringe Benefits	169,852	149,865
Professional and Consulting Services	46,158	51,156
Total Personnel Before Volunteer Services	749,190	688,053
Volunteer Lawyers and Counselors	441,933	361,591
Total Personnel	1,191,123	1,049,644
Contract Services	10,562	8,850
Office and Related Expenses	32,646	40,009
Library, Training, and Travel	18,502	15,417
Other Direct Program Expenses	15,581	16,661
Acquisition Office Equipment	14,042	1,217
Total Non-Personnel Expenses Before Other Donated Services, Facilities, and Supplies	91,333	82,154
Other Donated Services, Facilities, and Supplies	40,453	38,253
TOTAL EXPENSES	1,322,909	1,170,051
EXCESS/DEFICIENCY OF REVENUE	(681)	(14,280)

Note: These figures are derived from CLSACC's unaudited financial statements.

CLSACC gratefully acknowledges the following supporters who helped make our services possible during the past fiscal year.

FOUNDATIONS AND CORPORATIONS

The Walter and Alice Abrams Family Fund at the Boston Foundation
 The Annenberg Foundation
 Deborah Munroe Noonan Memorial Fund, Bank of America, Trustee
 The Barrington Foundation, Inc.
 Boston Bar Foundation
 Boston Evening Clinic Foundation
 Boston Private Bank & Trust Company
 Cambridge Community Foundation
 Cambridge Savings Charitable Foundation
 Citizens Bank Foundation
 Clipper Ship Foundation, Inc.
 The Clowes Fund
 Cogan Family Foundation
 The Deirdre M. Giblein and David B. DuBard Charitable Foundation
 Fish Family Foundation
 Fisher Family Foundation
 Charles & Sara Goldberg Charitable Trust
 The N and M Lazarus Fund
 Massachusetts Bar Foundation
 George H. and Jane A. Mifflin Memorial Fund
 StonehamBank
 Sun Hill Foundation
 Target
 Top of the Hill Fund
 Verizon Wireless
 Carol M. and Louis J. Volpe Foundation
 Wainwright Bank
 Charles O. Wood, III and Miriam M. Wood Foundation

PUBLIC SUPPORT

Massachusetts Legal Assistance Corporation
 United Way of Massachusetts Bay and Merrimack Valley
 City of Cambridge

LAW FIRM SUPPORT

Bander & Bander
 Bingham McCutchen, LLP
 Cashman & Lovely, P.C.
 Cosgrove, Eisenberg and Kiley, P.C.
 Law Offices of Milton Fatt
 Kotin, Crabtree & Strong, LLP
 Krokidas & Bluestein LLP
 McCue, Lee & Greene, LLP
 Miller, Canfield, Paddock and Stone, PLC
 Mintz Levin Cohn Ferris Glovsky & Popeo
 Taylor Duane Barton & Gilman, LLP

CY PRES AWARDS

The following law firms directed cy pres distributions to CLSACC:

Roddy Klein & Ryan

CORPORATE MATCHING GIFTS

Adobe Systems Incorporated
 ATMI
 Citizens Financial Group
 FM Global Foundation
 Mead Witter Foundation, Inc.
 USG Foundation

PRO BONO AND IN KIND SUPPORT

Chuck Connell, CHC-3 Consulting
 Dr. Leon O. Brenner Center for Psychological Assessment and Consultation
 Foley Hoag LLP
 Jill Friedlander
 Goulston & Storrs, PC
 Goodwin Procter LLP
 Harbor Capital Advisors
 IBM
 Susan Kattlove, M.D.
 Lesley University
 Ken Martin, Amstockphoto.com
 Massachusetts Continuing Legal Education, Inc.
 Beth Mitchell
 Hilary Mitchell, MBC Graphics
 Gary Pomerantz, Lexington Wealth Management
 Toni Lee Pomeroy
 Conrad Squires, The National Copy Clinic, Inc.
 Wausau Paper

The following local businesses made generous donations to our annual volunteer and holiday party: *Carberry's Bakery & Coffeehouse, Pesti Pies, and Tavern in the Square.*

COMMUNITY PARTNERS

Boston College Law School
 Cambridge Economic Opportunity Committee
 Cambridge Health Alliance Political Trauma Services Network
 Fielding Graduate University
 Finex House
 Greater Boston Legal Services
 Irish Immigration Center
 Legal Advocacy & Resource Center
 Lutheran Community Services
 New England School of Law
 Northeastern University
 Physicians for Human Rights
 Political Asylum/Immigration Representation (PAIR) Project
 Simmons College School of Social Work
 South Middlesex Legal Services
 Suffolk Law School
 Suffolk University, Department of Psychology
 Volunteer Lawyers Project

BOARD OF DIRECTORS

Anthony Mirenda, President Foley Hoag, LLP
 April English, Vice President Attorney General's Office
 D. Peter Brennan, Treasurer PricewaterhouseCoopers, LLP
 Anne Marie Cook, Clerk Miller, Canfield, Paddock and Stone, P.L.C.
 Elizabeth Anderson Middlesex District Attorney's Office
 Julia Byers Lesley University
 Carla Elder Community Advocate
 Martin Fantozzi Goulston & Storrs, P.C.
 Laurie Hall Edwards, Angell, Palmer & Dodge, LLP
 William Hodgetts Fidelity Investments
 Hugo Kamyra Simmons College School of Social Work
 Marie Lee McCue, Lee & Greene, LLP
 Judith McMorrow Boston College Law School
 Gary Pomerantz Lexington Wealth Management
 Rick Reinkraut Lesley University
 Mark Smith Goodwin Procter LLP
 Azizah Yasin Yasin Law Office

ADVISORY BOARD

Joseph Brenner Psychiatrist
 Jennifer Malloy Combs Sun Hill Foundation
 Marjorie Decker City of Cambridge
 Silvia Dominguez Northeastern University
 Susan Finegan Mintz Levin Cohn Ferris Glovsky and Popeo PC
 Dan Heffernan Kotin, Crabtree & Strong, LLP
 David Henderson Massachusetts General Hospital
 Bet MacArthur Clinical Social Worker
 David Martin MassINC
 Will McMullen Cambridge College
 Paul Nemser Goodwin Procter LLP
 Daria Niewenhous Mintz Levin Cohn Ferris Glovsky and Popeo PC
 Madeleine Timin Boston Properties
 Barbara Freedman Wand Bingham McCutchen LLP
 Rick Weissbourd Kennedy School of Government, Harvard University
 Phil Woodbury Attorney